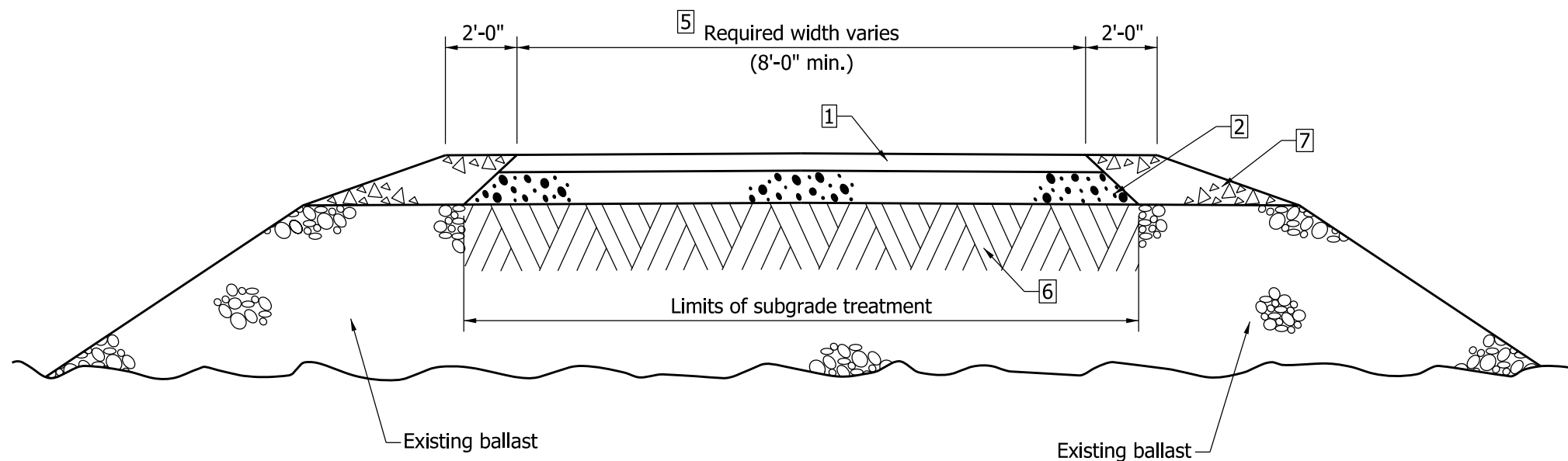


**LEGEND**

- 1 140 lb/yd<sup>2</sup> HMA Surface Type A, on 220 lb/yd<sup>2</sup> HMA Intermediate, Type A
- 2 6" Compacted Aggregate No.53, Base
- 3 Earth Shoulder
- 4 Subgrade Treatment (6" Coarse Aggregate No.53)
- 5 Width and Cross Slope as required

INDIANA DEPARTMENT OF TRANSPORTATION	
HMA NONMOTORIZED-VEHICLE-USE FACILITY PAVEMENT SECTION	
SEPTEMBER 2010	
STANDARD DRAWING NO. E 402-NVUF-01	
	<i>/s/ Richard L. VanCleave</i> 09/01/10 <hr/> DESIGN STANDARDS ENGINEER      DATE
DESIGN STANDARDS ENGINEER	<i>/s/ Mark A. Miller</i> 09/01/10 <hr/> CHIEF HIGHWAY ENGINEER      DATE



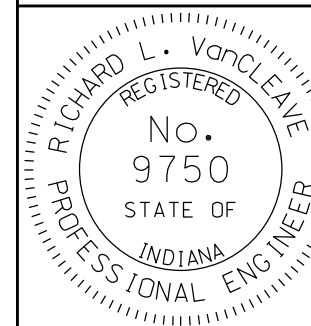
**LEGEND:**

- 1 140 lb/yd<sup>2</sup> HMA Surface Type A, on 220 lb/yd<sup>2</sup> HMA Intermediate, Type A
- 2 6" Compacted Aggregate No.53, Base
- 5 Width and Cross Slope as required
- 6 Subgrade Treatment (3" subgrade excavated and replaced with 3" Coarse Aggregate No.53)
- 7 Variable-depth Compacted Aggregate No.53 or No.73

INDIANA DEPARTMENT OF TRANSPORTATION

HMA NONMOTORIZED-VEHICLE-USE FACILITY  
PAVEMENT SECTION  
ON ABANDONED-RAILROAD CORRIDOR  
SEPTEMBER 2010

STANDARD DRAWING NO. E 402-NVUF-02



DESIGN STANDARDS ENGINEER

/s/ *Richard L. VanCleave* 09/01/10  
DESIGN STANDARDS ENGINEER DATE

/s/ *Mark A. Miller* 09/01/10  
CHIEF HIGHWAY ENGINEER DATE